

Product Dimensions and Specs

Overall	48W 24.25D 72H
Seat	31.25W 24.25D 19H
Wt.	276 lbs
Wt. Capacity	350 lbs

Product Features



Durable Finish

Protea™ Fusion doesn't have any of the drawbacks of wood. The finish is moisture impervious, easy to clean, and maintenance-free.



Anti-Tip Kit

An anti-tip device is included to minimize the risk of tip-over and enhance the overall safety of the product.



Door Hinges

100°self-closing, kitchen-grade Blum® Euro Hinges provide a smooth motion.



Clothes Rod

Standard clothing rod may be attached at ADA height of 48" from the floor.



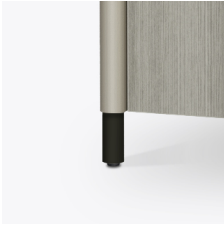
Drawers

All constructed with both dowel and mechanical fasteners for additional strength. Ball bearing removable slides are fully extendable.



Hardware

Choose from 3 hardware styles exclusive to the Ethan Collection.



Optional Premium Protea Leg

These optional contrasting premium finishes are available for the Ethan Collection legs – Platinum, Soft Gold, Pure Copper and Black.



Other Wardrobe Bench Styles

The Ethan Wardrobe with bench has several styles to choose from. No drawer, 1 door, a 1 drawer no door version or a no drawer no door version.



Optional Under Mount Power Module

An Under Mount Power Module plug is available and is optional. It cannot be used if the drawer option is selected.

Product Finishes

Protea Fusion



Wood Ash
(Fusion)



Midnight Oak
(Fusion)



Espresso
(Fusion)

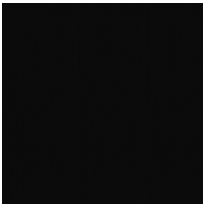


Natural
Mahogany
(Fusion)



African
Mahogany
(Fusion)

Optional Premium Protea Leg



Premium Black
(Classic)



Premium Soft
Gold (Classic)



Premium Pure
Copper (Classic)



Premium
Platinum (Classic)