

Kwalu Features

Product Dimensions and Specs

Overall	22W 23.5D 37.75H
Seat	19.5W 18D 29.5H
Arm	34H
Wt.	30 lbs
Wt. Capacity	350 lbs

Product Configurations

Madrid Collection

MDDXX

Height Style



**BST**  
Bar Height Stool

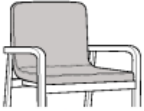


**CST**  
Counter Height Stool

Back Height

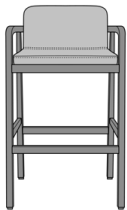


**111**  
Short Back

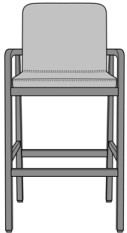


**211**  
Tall Back

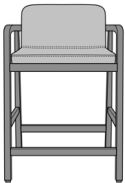
Product Statement of Line Images



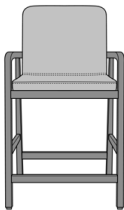
Madrid Bar Stool, Short Back  
Model: MDDBST111  
22W 23.5D 37.75H  
34AH



Madrid Bar Stool, Tall Back  
Model: MDDBST211  
22W 23.5D 43H  
34AH



Madrid Counter Stool, Short Back  
Model: MDDCST111  
22W 22.5D 32.25H  
28.5AH



Madrid Counter Stool, Tall Back  
Model: MDDCST211  
22W 22.5D 37.5H  
28.5AH

## Product Features



### Durable Finish

Kwalu's solid surface (1/8" thick) proprietary finish doesn't have any of the drawbacks of wood. The frames are moisture impervious, graffiti-resistant, easy to clean and maintenance-free.



### Steel Reinforced

Our patented steel-reinforced joint system uses over 20 pieces of steel in most Kwalu chairs. Stop ongoing and costly furniture replacement.

[Learn More >](#)



### Bar and Counter Height

Counter and bar heights available.



### Optional Taller Back Cushion

Available with a taller back cushion.

## Product Foam

Foam is compliant with CAL 117 and AB 2998

## Product Glides

Metal Knock in Glide with Teflon Cap

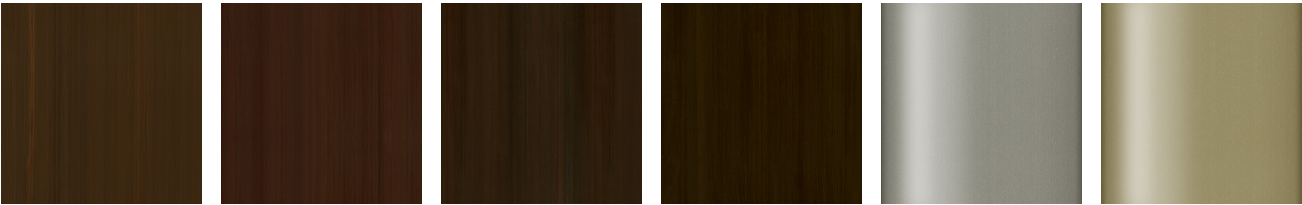
Product Finishes



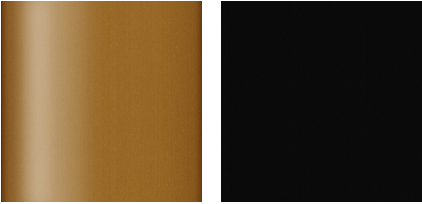
Sugar Maple    Weathered Teak    Northern Oak    Vintage Teak    Patagonian Cherry    Northern Walnut



Medium Cherry    English Chestnut    Light Walnut    Silver Ash    Golden Ebony    African Mahogany



Espresso    Natural Mahogany    Midnight Oak    Blackwood    Premium Platinum    Premium Soft Gold



Premium Pure Copper    Premium Black Copper

Product Environmental Certifications

