

Ampio Bariatric Upholstered Arms - Frame Finish



Sugar Maple



Weathered Teak



Northern Oak



Vintage Teak



Patagonian Cherry



Northern Walnut



Medium Cherry



English Chestnut



Light Walnut



Silver Ash



Golden Ebony



African Mahogany



Espresso



Natural Mahogany



Midnight Oak



Blackwood



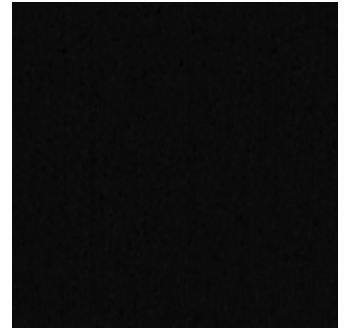
Premium Platinum



Premium Soft Gold



Premium Pure Copper



Premium Black

